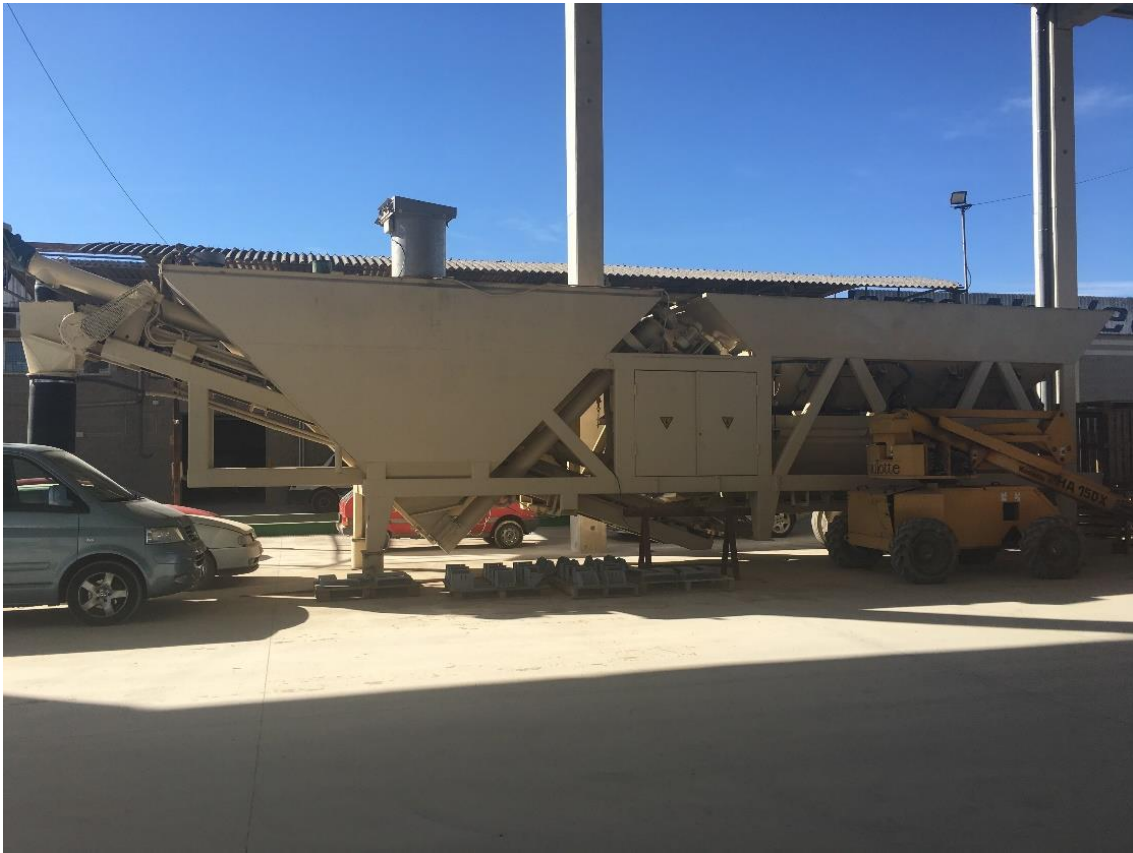
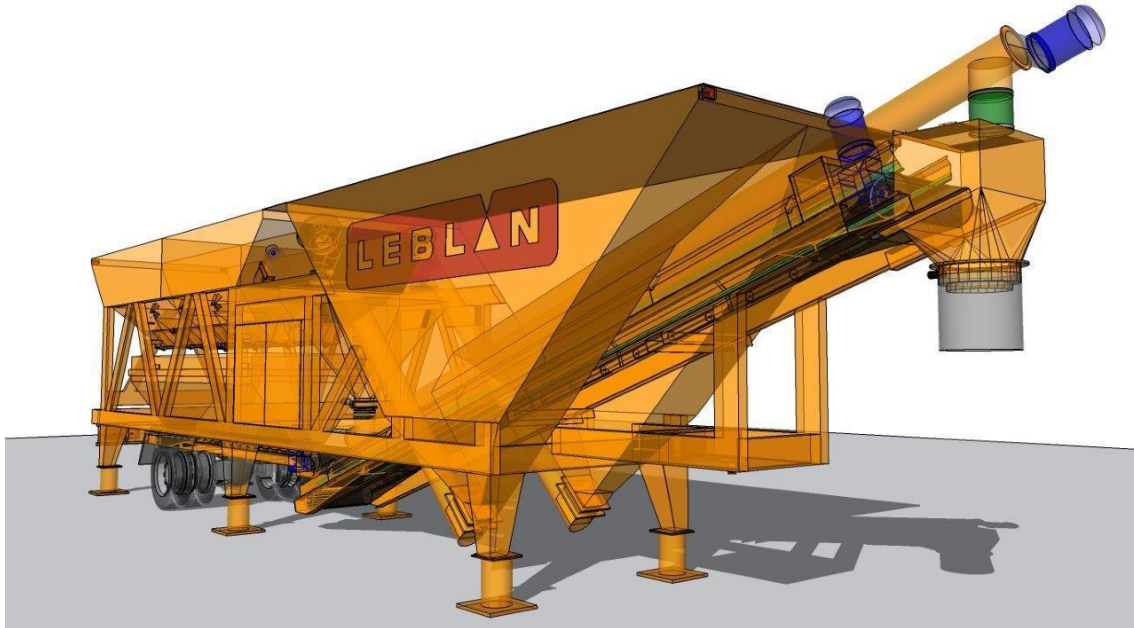


MOBILE CONCRETE PLANT – Model PHM 120









MOBILE CONCRETE PLANT – Model PHM 120 – Used

- Year 2000 – Dismantled and available in Barcelona for immediate delivery
- Compact chassis, stripped and painted, equipped with a kingpin (for fifth wheel) for trailer of the central body with tractor.
- Theoretical production of 120 m³ / hour
- Cycles : 3 m³ per weighing
- Group of hoppers: 4 compartments in cross. Total capacity of 40 m³, equivalent to 60 TN.
- Weighing conveyor for aggregates of 6.000 x 600 mm, inclination 0°, 2 motors of 5.5 kW and speed of 1.7 m / s
- 3m³ aggregate weighing hopper per cycle. Suspended by 4 cells of 3,000 kg each
- 9,000 x 650 mm elevation conveyor, 18° tilt, 2 x 7.5 HP engines and 1.7 m / s speed
- Triangular cement silo integrated into the power plant chassis, 25 TN capacity
- 2 screw conveyors at the outlet of the plant, 4.4 m long, Ø 273 mm, inclination of 45°, 75 TN / H, with 10 HP motors each
- Cylindrical scale for cement, capacity of 1,500 kg, suspended by cells of 1,000 kg / each
- 8,870 mm long cement elevation screw, Ø 273 mm, 18° inclination, 90 TN / hour - Cement transfer from cement scale to load hopper
- Pneumatic installation completely revised and in very good condition
- Compressor included
- Water installation with boiler balloon and meter. Lack the water pump
- Electrical installation completely revised and in very good condition

- Complete formulation automaton (2018), brand PROIN with PC and screen - the most common in Spain and reference abroad - With this automaton we can realize about 5000 different formulations, enough to satisfy the different customers - The connectors are new.
- Control cabin 4 x 2.4 m - The cabin is configured inside a container, with toilet and air conditioning - Incorporates electrical cabinet and management unit of the power plant for the load of cement mixer trucks

For more information, contact:

Nikola Vlaev

Technical Director

EEEC (EUROPE) LTD

eec.me.technical@gmail.com

TEL: 0035795716353